



THE
BARREN
FIG TREE

Third Sunday in Lent
March 20, 2022
Our Savior's Lutheran, ELCA

Order of Worship

Prelude

Welcome/Announcements

Invocation (Pastor)

*Gathering Hymn "Guide Me Ever, Great Redeemer"

618



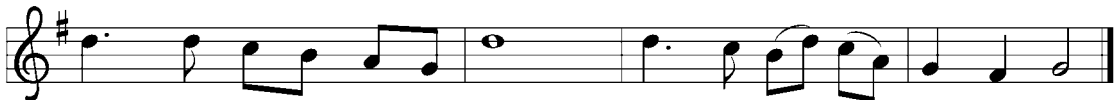
1 Guide me ev - er, great Re - deem-er, pil - grim through this
2 O - pen now the crys - tal foun-tain where the heal - ing
3 When I tread the verge of Jor - dan, bid my anx - ious



bar - ren land. I am weak, but you are might - y; hold me
wa - ters flow; let the fire and cloud - y pil - lar lead me
fears sub - side; death of death and hell's de - struc - tion, land me



with your pow'r - ful hand. Bread of heav - en, bread of heav - en,
all my jour - ney through. Strong de - liv - 'rer, strong de - liv - 'rer,
safe on Ca - naan's side. Songs and prais - es, songs and prais - es



feed me now and ev - er - more, feed me now and ev - er - more.
shield me with your might-y arm, shield me with your might-y arm.
I will raise for - ev - er - more, I will raise for - ev - er - more.

*Confession/Forgiveness (Pastor)

L: Blessed be the holy Trinity...

C: Amen (Congregation speaks in bold)

L: Almighty God....

C: Amen

L: Most merciful God,

C: we confess that we are captive to sin and cannot free ourselves. We have sinned against you in thought, word, and deed, by what we have done and by what we have left undone. We have not loved you with our whole heart; we have not loved our neighbors as ourselves. For the sake of your Son, Jesus Christ, have mercy on us. Forgive us, renew us, and lead us, so that we may delight in your will and walk in your ways, to the glory of your holy name. Amen.

L: In the mercy...

C: Amen.

Apostolic Greeting (Pastor)

Kyrie

(Sung)

L: In Peace....

C: Lord Have Mercy (repeat)

Lament for Peace and Healing

700 (tune- 778)

1 *Where armies scourge the countryside,
and people flee in fear,
where sirens scream through flaming
nights,
and death is ever near:*

Refrain

***O God of mercy, hear our prayer:
bring peace to earth again!***

2 *Where anger festers in the heart,
and strikes with cruel hand;
where violence stalks
the troubled streets,
and terror haunts the land: **Refrain***

3 *Where homes are torn by bitter strife,
and love dissolves in blame;
where walls you meant
for shelt'ring care
hide deeds of hurt and shame: **Refrain***

4 *O God, whose heart compassionate
bears ev'ry human pain,
redeem this violent,
wounding world
till gentleness shall reign. **Refrain***

Text: Herman G. Stuempfle Jr., b. 1923
Text © 1996 World Library Publications, 3708 River Rd., Suite
400, Franklin Park, IL 60131. All rights reserved.

Prayer of the Day (Pastor)

First Lesson

Isaiah 55: 1-9

Jesus Loves me! This I know, for the bible tells me so; little ones to him belong, they are weak, but he is strong. Yes, Jesus loves me, yes, Jesus loves me, yes, Jesus loves me, the Bible tells me so.

Let the Children Come....

I love Jesus, does He know? Have I ever told Him so? Jesus loves to hear me say, that I love Him every day. Yes, Jesus loves me, yes, Jesus loves me, yes, Jesus loves me, the Bible tells me so.

Psalm 63: 1-8

*Gospel Acclamation

(Sung) ***Return to the Lord, your God, for he is gracious and merciful, slow to anger, and abounding in steadfast love.***

*Holy Gospel

Luke 13: 1-9

Sermon

Sermon Hymn

331

"As the Deer Runs to the River"



1 As the deer runs to the riv - er, parched and wea - ry from the chase,
2 When your Is - rael crossed the des - ert where no stream or spring was seen,
3 "Come and drink," I - sa - iah sum-moned, "all who for God's mer - cy plead!
4 Christ, we come from des - ert plac - es, deep - est thirst un - sat - is - fied.



we have come from hurt and hur - ry, thirst - ing for your heal - ing grace.
Mo - ses struck the rock, and wa - ter flowed for them, re - fresh - ing, clean.
God's for - give - ness, like a foun-tain, flows to sat - is - fy your need."
Lead us to the wa - ters flow - ing from the cross on which you died.

Refrain



Je - sus, source of liv - ing wa - ter, may we drink of you and live!

Prayers of the People

L:Merciful God,

C: receive our prayer.

Quilt Blessing (Pastor)

Sharing the Peace

Offering Invitation

Offering

Offering Prayer (Pastor)

*The Great Thanksgiving

(Sung) L: The Lord...

C: And also with you,

L: Lift up...

C: We light them to the Lord.

L: Let us give...

C: It is right to give our thanks and praise.

L: It is indeed...

Holy, Holy, Holy

(Sung) ***Holy, holy, holy Lord, Lord God of power and might, heaven and earth are full of your glory. Hosanna in the highest. Blessed is he who comes in the name of the Lord. Hosanna in the highest.***

Words of Institution (Pastor)

Lord's Prayer

Lamb of God

(Sung) ***Lamb of God, you take away the sin of the world; have mercy on us. Lamb of God, you take away the sin of the world; have mercy on us. Lamb of God, you take away the sin of the world; grant us peace, grant us peace.***

Sharing the Meal

*Communion Blessing

*Communion Prayer

"O Living Bread from Heaven"



- 1 O liv - ing Bread from heav - en, how well you feed your guest!
- 2 My Sav - ior, you have led me with - in your ho - liest place,
- 3 You gave me all I want - ed; this food can death de - stroy.
- 4 Oh, grant me then, well - strength - ened with heav'n - ly food, while here



The gifts that you have giv - en have filled my heart with rest.
 and here your - self have fed me with trea - sures of your grace;
 And you have free - ly grant - ed the cup of end - less joy.
 my course on earth is length - ened, to serve you, free from fear;



O won - drous food of bless - ing! O cup that heals our woes!
 for you have free - ly giv - en what earth could nev - er buy,
 My Lord, I do not mer - it the fa - vor you have shown,
 and bring me home to praise you where none can peace de - stroy,



My heart, this gift pos - sess - ing, in thank - ful song o'er - flows!
 the bread of life from heav - en, that now I shall not die.
 and all my soul and spir - it bow down be - fore your throne.
 where I will ev - er raise you glad songs in end - less joy.

Text: Johann Rist, 1607–1667; tr. Catherine Winkworth, 1827–1878, alt.
 Music: AURELIA, Samuel S. Wesley, 1810–1876

*Blessing

*Sending

L: Go in peace to love God and serve your neighbor

C: Thanks be to God!

Postlude

ANNOUNCEMENTS FOR MARCH 20TH, 2022.

SOUP SUPPERS & LENTEN, & HOLY WEEK SERVICES: Wednesday Soup Suppers are 5pm each week and the Lenten Service follows at 6pm, through April 6th. There is a **sign-up sheet to serve** on the left side door entering the kitchen.

HOLY WEEK SCHEDULE: *Palm Sunday Service is April 10th at 9:30am, Maundy Thursday Service is April 14th at 6pm, Good Friday Service is April 15th at 6pm, and Easter Sunday's Worship Service is April 17th at 9:30am.*



NEW ADDRESS for giving to Lutheran World Relief: *If you wish to give, make checks payable to Lutheran World Relief and write "Ukraine Match" on your check's memo line, and send to **Lutheran World Relief, P.O. Box 17061, Baltimore, MD 21297-1061.** You may also call 800-638-3522 to donate. SEE INSERT!*

MARCH FOOD DRIVE: Quad Cities Food Shelf could use monetary donations the most to help stock up for March's food drive. The food shelf is able to purchase food for one fourth the cost from Second Harvest etc., so monetary donations are best at this time. If you would like to give, make your checks out to "Quad Cities Food Shelf" and send it to them at: P.O. Box 680, Virginia, MN 55792.

CLOTHING SALE: **We are now taking donations** of clean, gently used clothing for the spring sale April 29-30th. Clothing for all seasons needed! *Please **DO NOT** bring donations for a used-a-bit (stuff) sale. We do not have a sale scheduled and there is no room to store donations until one can be planned. **YOU'RE INVITED!** Come join us the week before the sale to sort and set up tables! It's a fun time for everyone involved and there is usually a free lunch included. Dates & times will be announced soon ~

OSLC CLOTHES LINE: Our Clothes Line is still at the west wing door entrance. We could use cold weather items right now! Coats, sweaters, boots, hats, mittens, gloves, scarves... If you have anything to donate, just pull up and deposit your items on the clothing line.

QUILTING: Thank our Quilters today when you see them! You are also invited to join quilters Wednesdays to help piece them together. They break for coffee and at noon for lunch. **Quilters could use your gently used flannel fabric or sheets** if you have extras at home – we will be making baby kits & receiving blankets to send to Ukraine/Poland!



**National Quilting Day was yesterday – we are blessing the quilts & quilters today!*

TIME & TALENT SHEETS: Time & Talent sheets can be deposited in the basket in the narthex. Please prayerfully consider how God can use your time and talents in OSLC and the community.

GREAT NEWS FOR OUR BROADCAST! The Radio Station has secured 104.9 FM for broadcasting so now you can listen to either 1340AM, or the new FM channel. The antenna will be going through updates this spring so this will give you two places to listen to our broadcast Sundays. If you would like to sponsor a broadcast in honor of a special date or in memory of someone special in your life, contact the church office with the date you have in mind.

OFFICE HOURS: The Church office hours are Mon-Wed from 10am to 4pm, and Friday 10am to 4pm (Pastor Tim will have Mondays off and Colleen has Thursdays off). If you need anything call us ahead of time at the church to make sure we are there and able to help you – sometimes we are running errands or at the post office. **The church office phone is 218-741-6207, and Pastor Tim’s cell # is 320-226-7074. If we do not answer, please leave us a detailed message so we can return your call promptly.*

FOR THE PRAYER CHAIN: You may call Ginny Ahrlin @ 218-749-4718 for the month of March. We pray for people in need of comfort, hope, healing, or safe transition: Gus, Sharon, Jared, Butch, Colleen, Aaron, Kim, Ross, Arthur, Abi M., Jen, Bonnie, Rodney, Tyler, Wally, Harlow, 7 yo girl, Laura, Kathy, Mary, Piper, Marilee, Faye A., Ed, Helen, Steve, Janet, Kathryn, Gerilyn, Shay, Martha, Bob & Betty C., Bonnie, Victoria, Bob & Wife, Ken & Wife, Bonnie, Jeanette, Carolyn, Dorothy.

A CALL FOR PEOPLE TO JOIN OUR PRAYER CHAIN: *If you have a heart of compassion for others, you are more than equipped to pray for people in their time of need. Being a part of a prayer chain involves spending a few moments of your week passing along a request to another person on the chain, and then praying for that person’s need or praise. It’s a ministry that doesn’t require a great deal of time – but it has a significant impact on people’s lives. We all could probably speak of the blessings & comfort we have experienced through prayer, so let our faith grow deeper as we act on behalf of others and become engaged with what God is doing in the world. Call Janet Heglund if you have questions or would like to hear more about this ministry: 218-749-6143.*

OSLC’S ENDOWMENT FUND

Your giving has enabled the Endowment Fund to grow and bless our community in so many ways. The Endowment Committee has given to the following ministries:

Quad Cities Food Shelf \$1000

Care Partners \$500

NEMN United Way \$500

ELCA World Hunger \$500

Mission Jamaica Legacy \$500

LSS Center for Changing Lives \$500

Voyageurs Lutheran Ministry \$1500

Thank you for your faithfulness to the Lord and to the ministries of OSLC and your community.

WELCA CINNAMON ROLL SALE

Pre-paid orders will be taken **through today in the narthex** for those huge mouth-watering cinnamon rolls! The cost is \$1.25 each and they will be available for pick-up on Palm Sunday.



Join us for a
**5:00 pm Soup Supper
& Worship at 6:00 pm**
every Wednesday
through April 6th.



LENT

Soup Suppers & Worship provide a way for us to gather once a week during Lent and experience the journey of repentance & remembrance together.